

MaxDAQ

Analog Data Acquisition Module

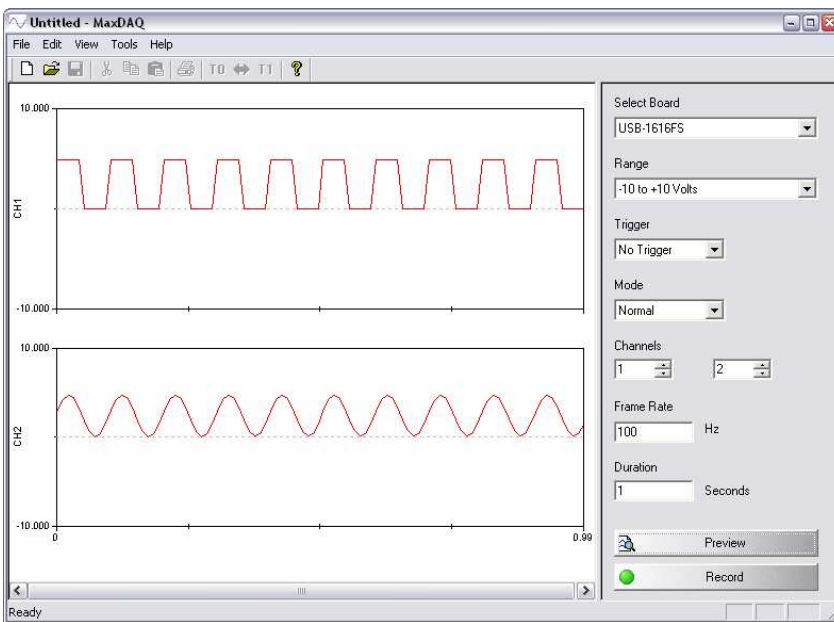
MaxDAQ is designed for collecting analog data in conjunction with MaxTRAQ 2D, MaxTRAQ 3D or MaxPRO.

An easy to use, flexible and inexpensive way to integrate AD/D. MaxDAQ is USB interfaced and has a number of different channel configurations to choose from – 8, 16, 32, 48 or 64.

MaxDAQ includes:

- Software - MaxDAQ data acquisition software
- Hardware - USB data acquisition station. All aluminum to ensure that the device is rugged.

Now you can integrate any force plate (AMTI, Kistler, Bertec), EMG (Delsys, Noraxon, etc.), or any other external sensors.



Hardware

- 8, 16, 32, 48 or 64 single-ended analog inputs
- 16-bit resolution
- Simultaneous input sampling (one A/D converter per input)
- Up to 200 kS/s total module throughput
- Software or hardware trigger
- Exclusive USB expansion port allows daisy-chaining of multiple units

Software

- MaxTRAQ multiview/sync
- Integrated into MaxPRO
- Export to ASCII
- Software or hardware trigger

MaxDAQ Specifications	
Number of analog input channels	8, 16, 32, 48, 64
Output	ASCII
Form Factor	USB
Measurement Type	Voltage, Digital I/O, Multifunction
Analog Input: channels, Resolution, Rate, Range, Biopolar	8 SE, 16 bit, 200 kS/s, -10 to 10, -5 to 5, -2 to 2, -1 to 1
Digital I/O: Number of Channels	8
Counter Timer: Inputs, Resolution	32 bit
Computer Requirements for MaxTRAQ 2D	
Operating system, CPU, Memory, Video card	Windows XP/Vista/7 (32/64 bit), 1.8 GHz or better, 4 GB, True Color